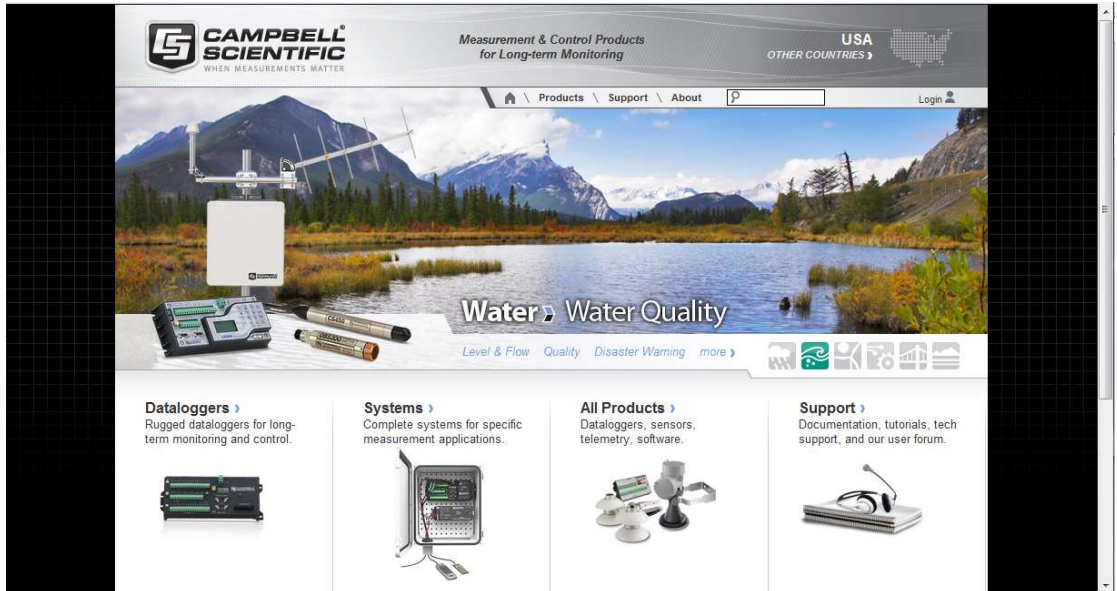
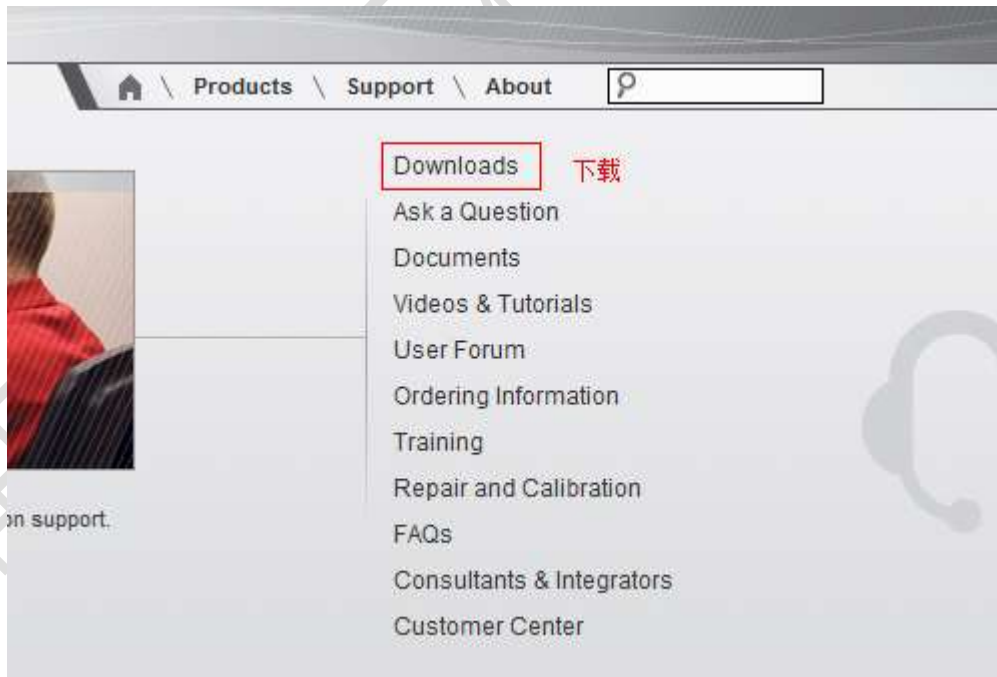


EC100 倒操作系统

1. 先从 CAMPBELL 官网下载 EC100 的最新操作系统，方法如下：
 - A. 在地址栏输入如下网址：<http://www.campbellsci.com/>，打开之后页面如下：



- B. 在 Support 的下拉列表里选择 Downloads。



- C. 选择完成之后，在 Downloads by Name 的下拉列表里面选择 EC100 OS。

Downloads

Download the Latest Software and Operating System Upgrades



Downloads by Category or Downloads by Name or Search by Name

Latest Downloads

Name / Version	Description / Restrictions
Download Now RF430 USB Drivers 2.08.2 1.84 MB	RF430 USB Drivers for the Windows operating system. 32 and 64 bit support for Windows 8, Windows 7, Windows Vista and Windows XP. NOTE: Drivers should be loaded before plugging the RF430 into the computer.
Download Now A205 CWS Interface USB Driver 2.08.28 1.84 MB	A205 USB Drivers for the Windows operating system. 32 and 64 bit support for Windows 8, Windows 7, Windows Vista and Windows XP. NOTE: Drivers should be loaded before plugging the A205 into the computer.
Download Now USB to Serial Driver (FTDI Chip Set) 2.08.28 1.84 MB	This driver is for the CB-FTDI USB to Serial cable (CSI Part# 17394 - Black Cable). Support is for Windows XP/Vista/7/8 32 & 64 bit. This driver is not compatible with the SC-USB Interface. NOTE: Install the driver before plugging the cable into your computer. Once the

Home \ Support \ Downloads

Home \ Products \ Support \ About

Downloads

Download the Latest Software and Operating System Upgrades



Downloads by Category or Downloads by Name or Search by Name

Operating Systems | Other

Name / Version	Updated	Description / Restrictions
Add to List EC100 OS 3.0 815 KB 下载	12 Oct 12	EC100 Operating System. View Revision History

D. 点击 Add to List 后弹出对话框如下:

Downloads by Category or Downloads by Name or Search by Name

Your Downloads

After submitting the following form, we will send you an email (to the address you enter) with instructions for downloading the file(s) in your list. Required fields are marked by an *.

File Size	Name / Version	Updated	Description / Restrictions
815 KB	EC100 OS 3.0	12 Oct 12	EC100 Operating System.

Contact Information

This information is for Campbell Scientific only and will not be shared nor sold to third parties. * indicates a required field.

Name (first & last) *

Organization *

Email (please double check) *

Phone *

Country *

Address

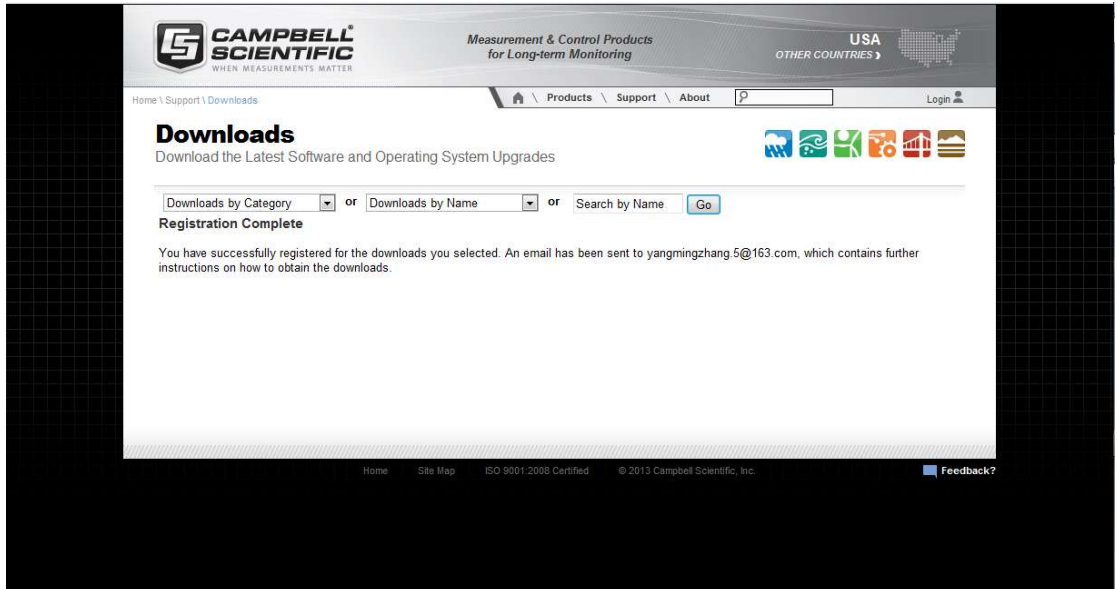
City

State or

Postal Code

PLEASE MAKE SURE YOUR EMAIL FILTER ALLOWS EMAILS FROM "campbellsci.com".

E. 填好相应的信息后点击 Submit 提交。

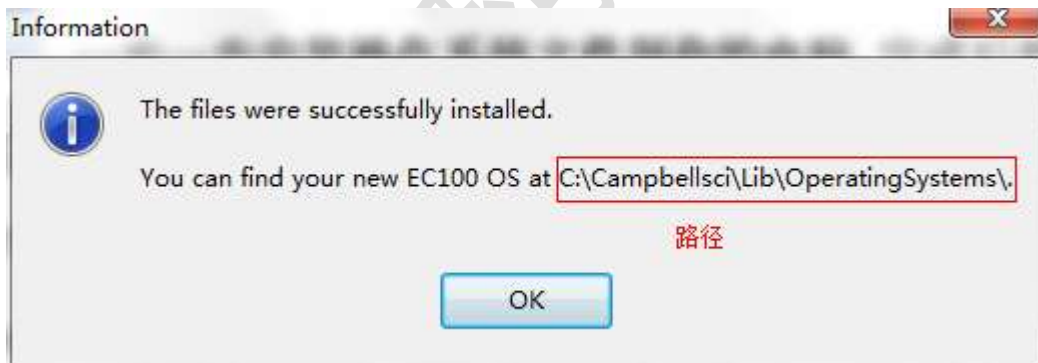


F. 完成之后进到你的邮箱里面找到链接地址下载操作系统文件。

G. 下载完成之后，点击下载完成的文件让其运行：



，一步一步安装操作系统文件到你的电脑，完成后提示如下：



记住操作系统文件安装完成之后的路径。

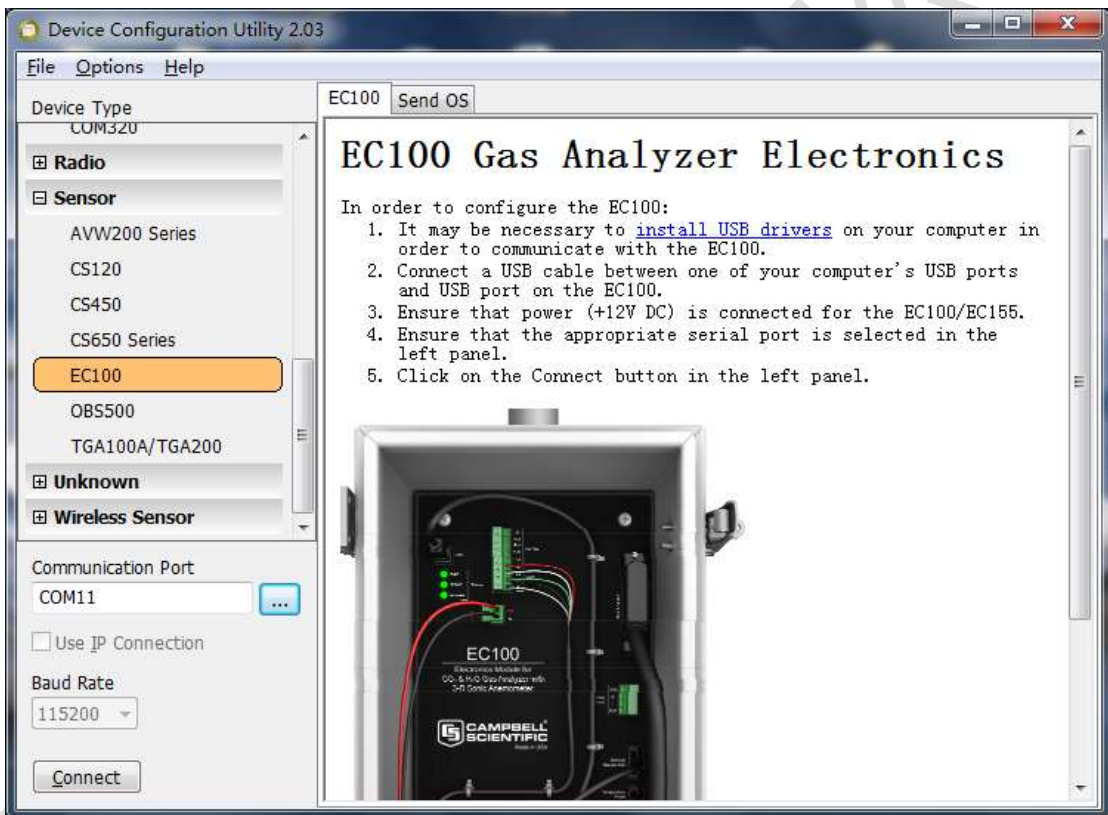
2. 给 EC100 机箱供电，供电采用 12V 直流供电，供电正常后 POWER 灯正常变绿，三维超声风速仪及红外气体分析器建议断开连接：



3. 使用 EC100 机箱自带的 USB 线连接 EC100 机箱到电脑，一端连接 EC100 机箱，一端连接电脑，连接方法如下：



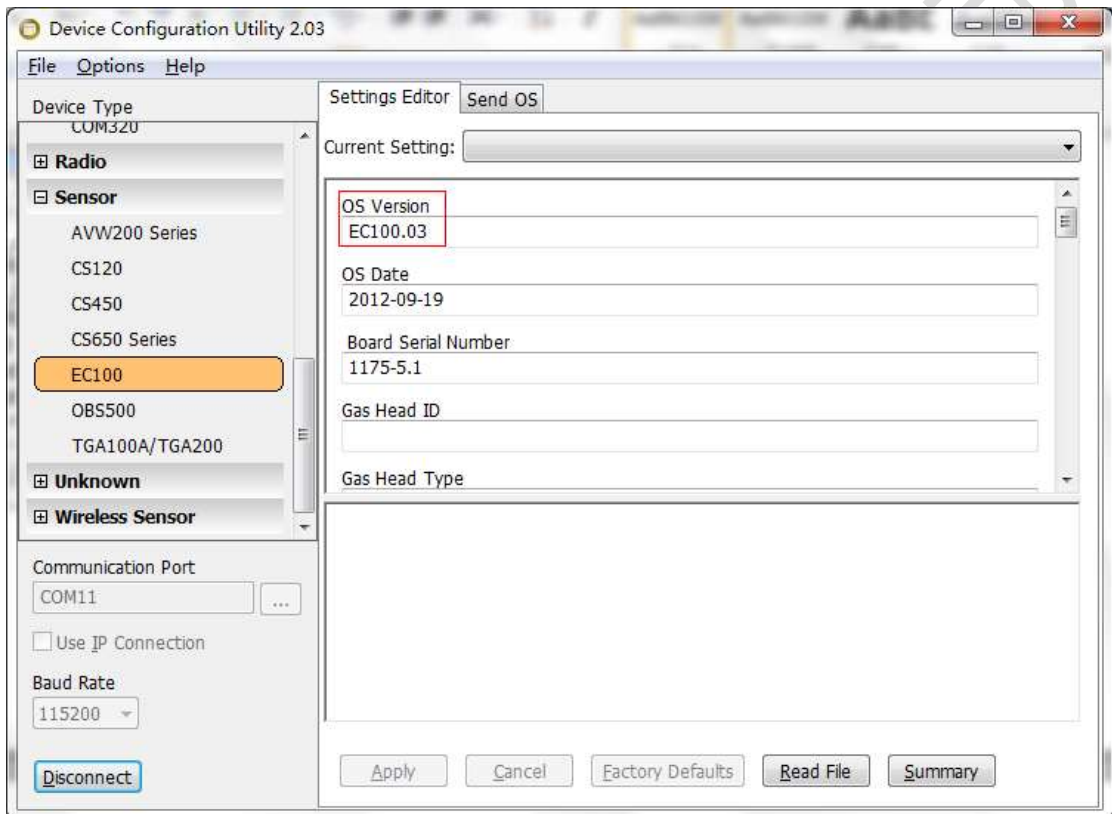
4. 打开已经安装完成的 Device Configuration (安装方法参照 Loggernet 说明书),



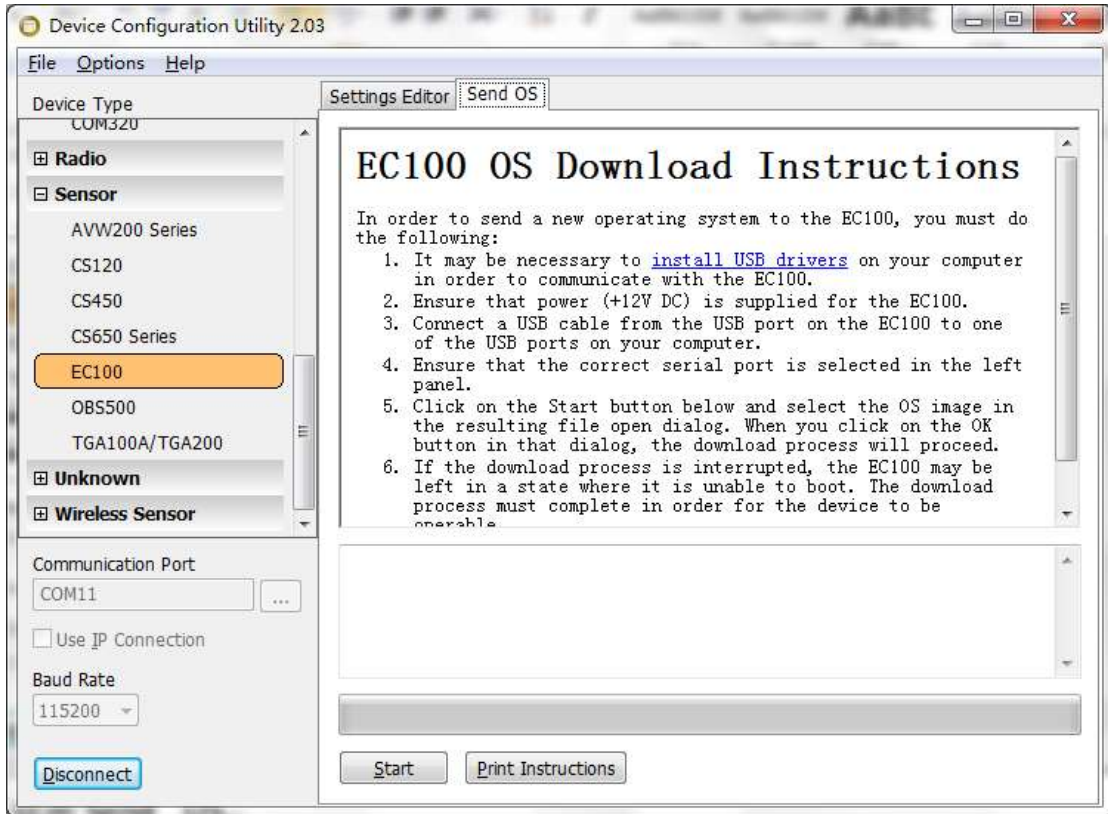
在 Device Type 里面选择 EC100, 在 Communication Port 里面选择电脑分配的 COM 口, 点击 OK, 完成之后连接 Connect。



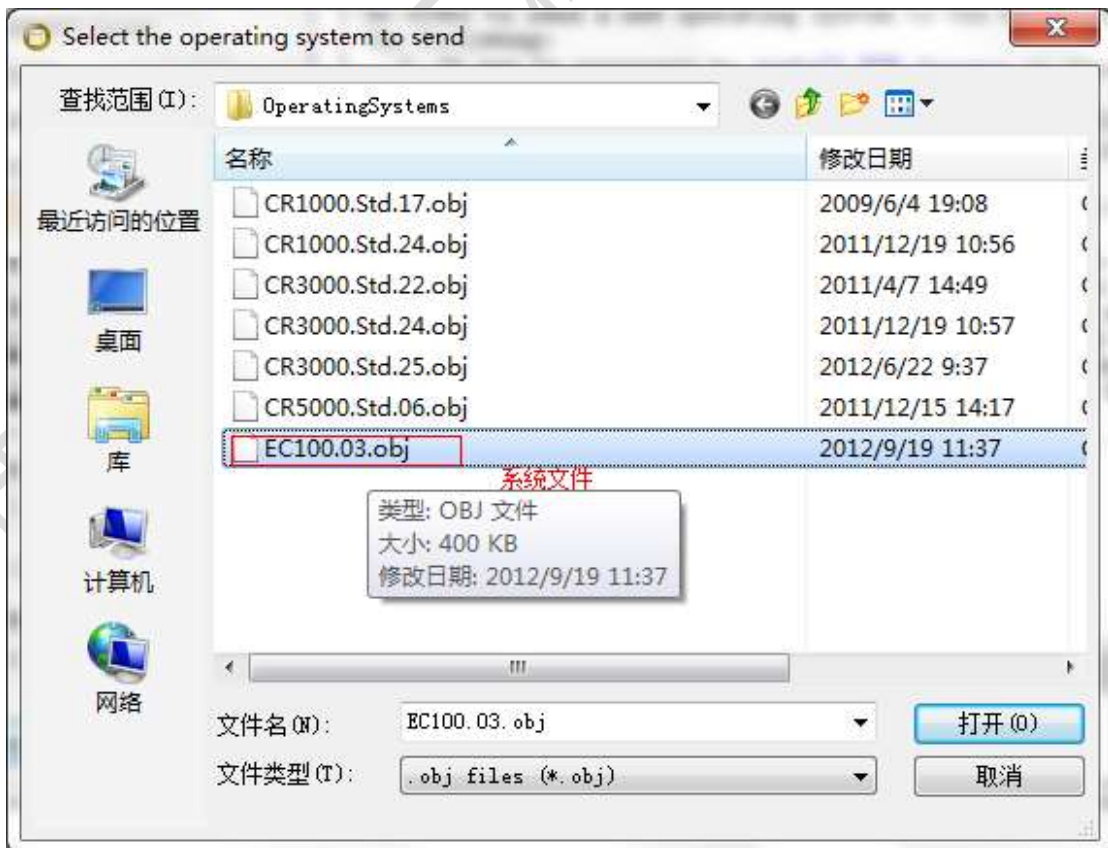
5. 在连接成功的对话框里能看到 EC100 当前的系统版本。



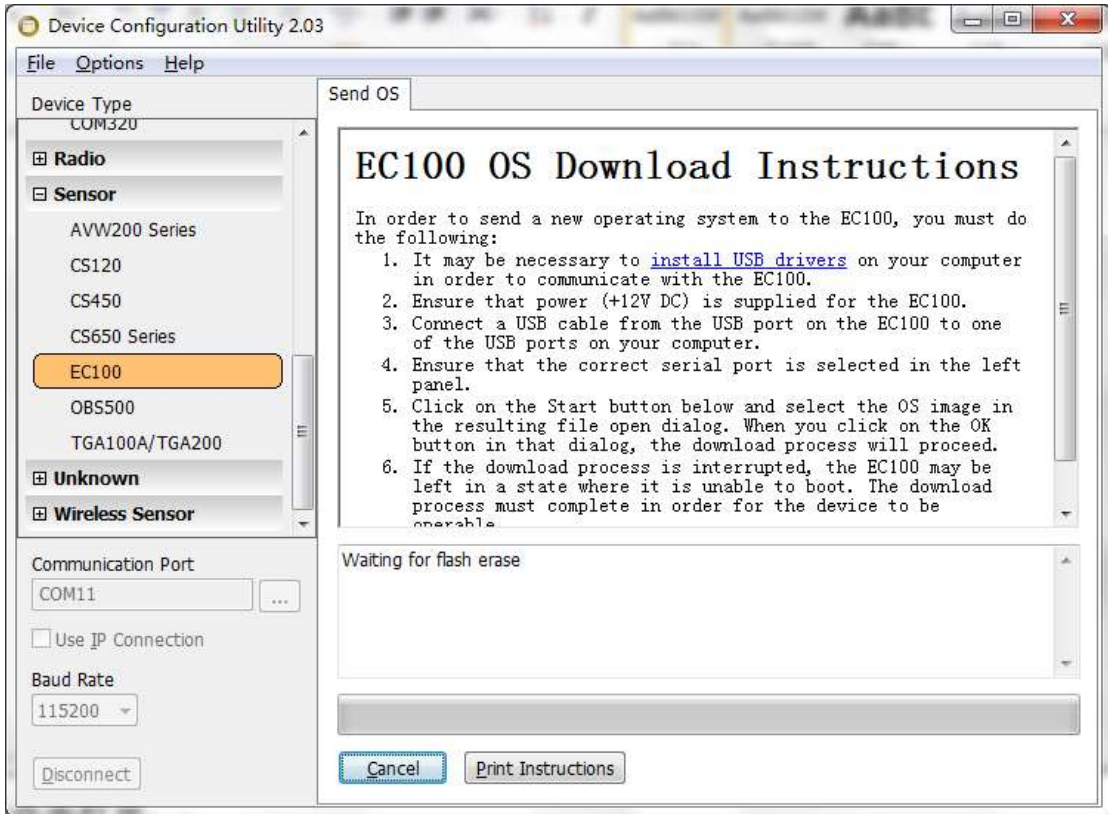
6. 然后点击 Send OS.



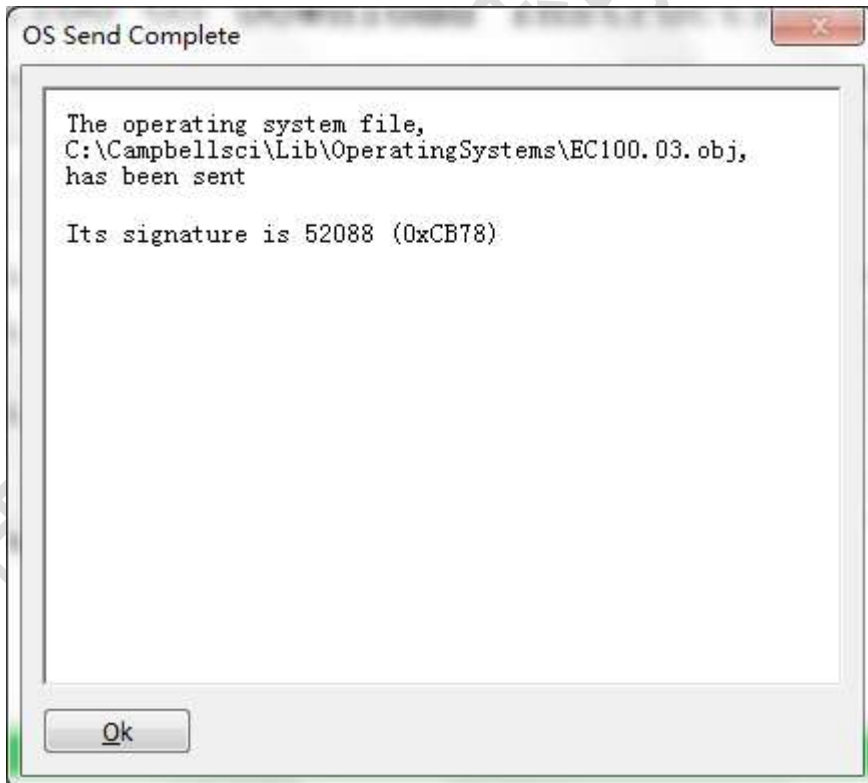
7. 按照对话框里面的步骤确保前面的操作没有问题，确认后点击 Start，在弹出的对话框里面找到前面安装完成后生成的系统文件。



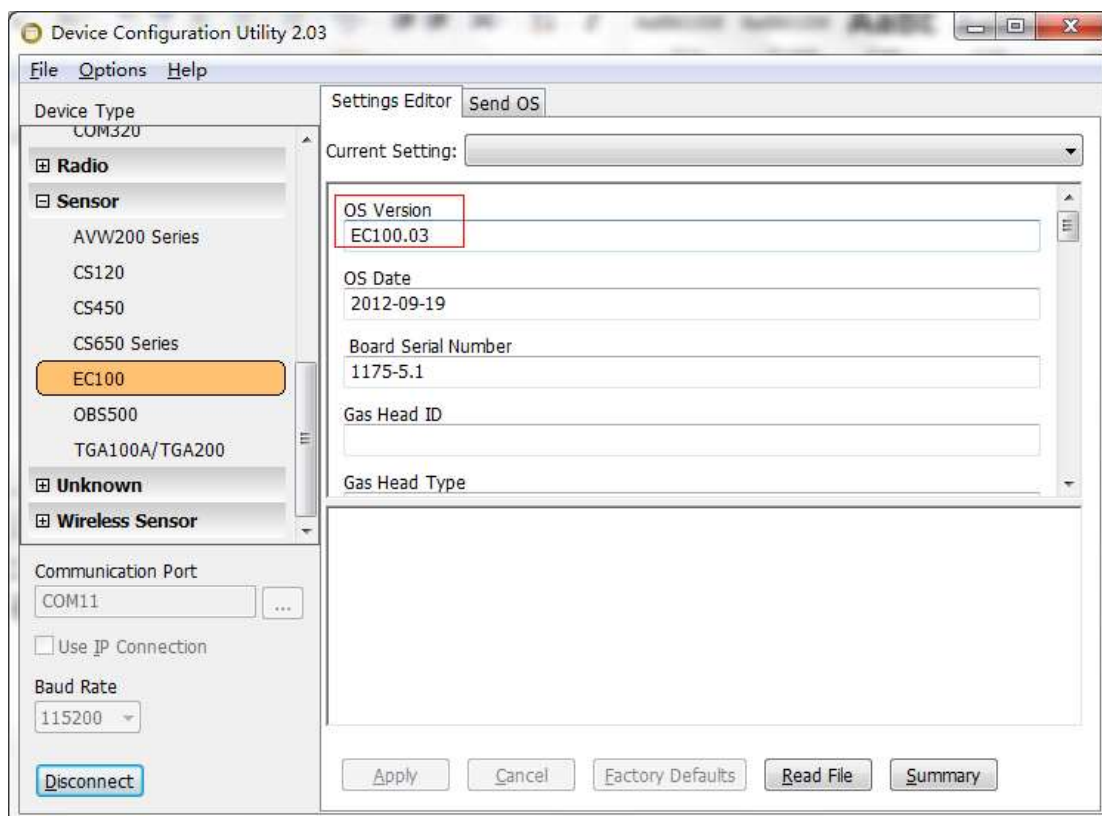
然后点击打开，会弹出系统导入的进度，下面的过程让仪器自动完成。



8. 完成之后系统导入完成之后提示如下：



然后在连接的界面能看到系统导入后系统的版本号。



联系我们

说明书编写过程比较仓促，错误之处，敬请包涵。在后续的使用过程中，应客户的要求将积极增加新的内容，使用过程中如有任何问题，请与我公司联系。

南京云蓝风汇科技有限公司

Nanjing Sci-sky Technology Co.,Ltd

地址：南京市江宁区民营科技园天泰公寓 D1-106

TEL： 025-52195520

E-mail:zll@sciencesky.cn

网址： www.sciencesky.cn